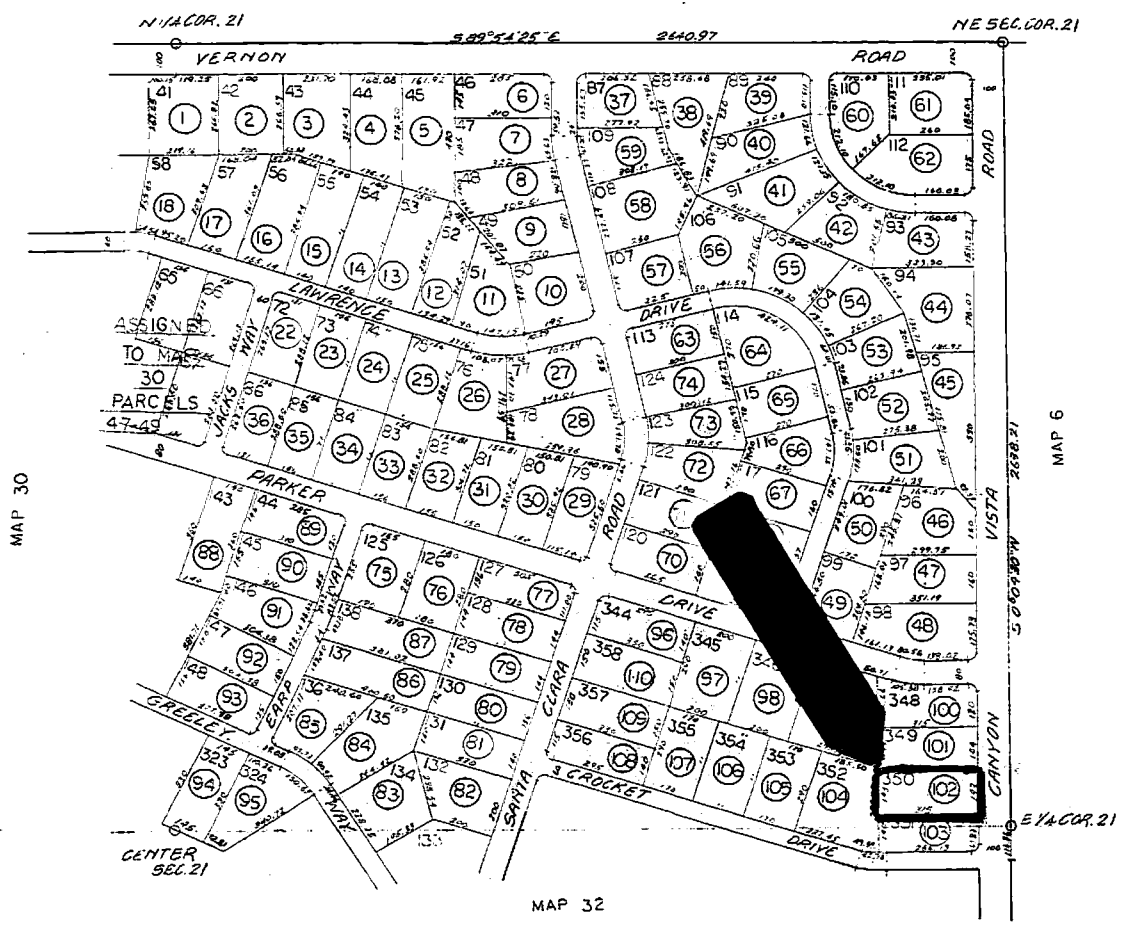


TOWNSHIP 26N RANGE 3E  
SECTION

NE 1/4, SEC. 21  
GRAND CANYON SUB. UN. 7  
LOTS: 41-58, 65-67, 72-132, 134-136,  
143-146, 323-324, 344-356

MAP 6



COCONINO COUNTY  
ARIZONA



ASSESSOR  
1963

scale 1:300  
10-75

Item # 82

501-31-102

This is a copy of a county map. The Seller and Auctioneer make no warranties regard: map accuracy, land use restrictions, legal or physical access, road improvements, or any lack thereof. Please inspect the property personally prior to bidding at the auction.